

Filled System Thermometers

Gas Actuated - How to Order

Table 1
Case Size & Style

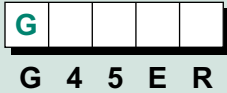


Table 2
Thermal System & Bulb



Table 3
Capillary Length (feet)



Table 4
Temperature



Table 5
Options



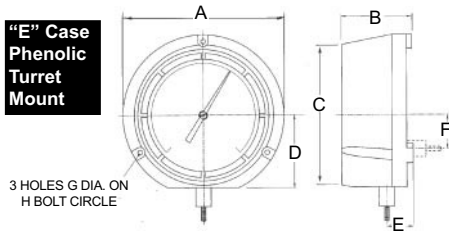
Table 1-Case Style

Wall Mount ("E" or "K" case)

CASE CODE	CASE DIAMETER	CONNECTION
-----------	---------------	------------

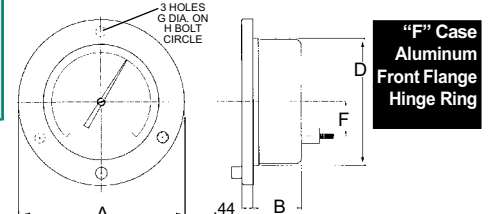
Panel Mount ("F", "S" or "U" case)

"E" Case
Phenolic
Turret
Mount



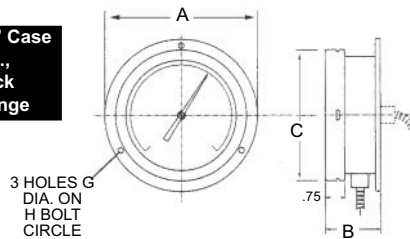
G45ER	4 1/2"	REAR
G45EL	4 1/2"	LOWER

G45FR	4 1/2"	REAR
G60FR	6"	REAR



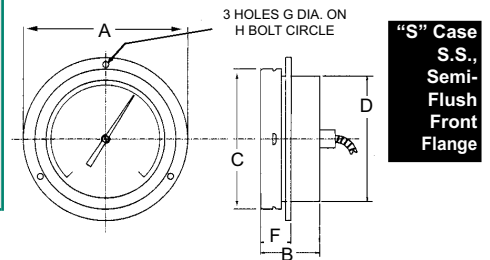
"F" Case
Aluminum
Front Flange
Hinge Ring

"K" Case
S.S.,
Back
Flange



G45KR	4 1/2"	REAR
G45KL	4 1/2"	LOWER
G60KR	6"	REAR
G60KL	6"	LOWER

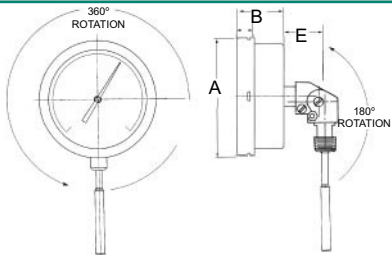
G45SR	4 1/2"	REAR
G60SR	6"	REAR



"S" Case
S.S.,
Semi-Flush
Front Flange

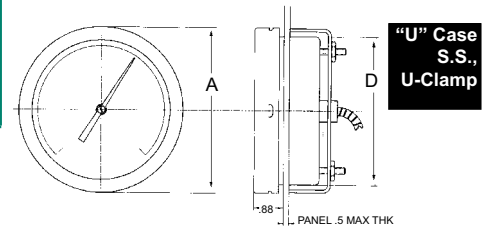
Direct Mount ("D" case)

"D" Case
S.S.,
All-Angle
Direct
Mount



G45DA	4 1/2"	ADJUST
G60DA	6"	ADJUST

G45UR	4 1/2"	REAR
G60UR	6"	REAR



"U" Case
S.S.,
U-Clamp

Case Dimensions

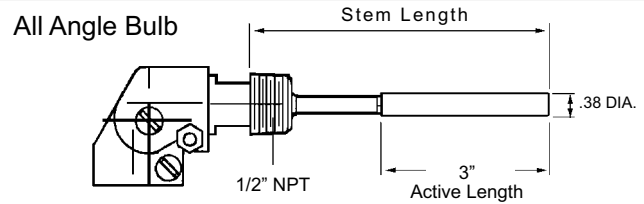
Case Size	Case	Type	A	B	C	D	E	F	G	H
4 1/2"	"E"	Turret Phenolic	5.83	2.56	5.08	2.62	1.0	.20	.24	5.39
4 1/2"	"F"	Front Flange	6.31	1.63	-	4.88	-	1.35	.19	5.38
4 1/2"	"K"	Back Flange	5.88	2.15	5.04	-	-	-	0.22	5.38
4 1/2"	"S"	Semi-Flush	5.88	2.15	5.04	4.51	-	1.00	0.22	5.38
4 1/2"	"D"	All Angle	5.04	2.00	-	-	1.70	-	-	-
4 1/2"	"U"	U-Clamp	5.04	-	-	4.51	-	-	-	-
6"	"F"	Front Flange	7.87	1.59	-	6.34	-	1.75	0.19	6.69
6"	"K"	Back Flange	7.50	2.15	6.38	-	-	-	0.25	6.84
6"	"S"	Semi-Flush	7.50	2.15	6.38	5.88	-	1.00	0.25	6.84
6"	"D"	All Angle	6.38	2.15	-	-	1.70	-	-	-
6"	"U"	U-Clamp	6.38	-	-	5.88	-	-	-	-

REOTEMP INSTRUMENT CORPORATION

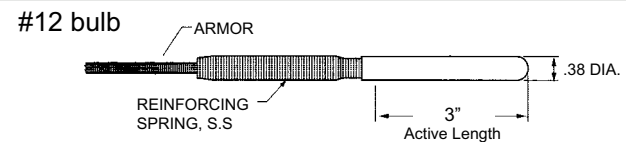
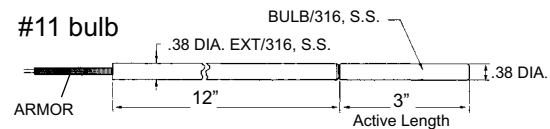
Telephone: (800) 648-7737 FAX (858) 784-0720 • sales@reotemp.com • www.reotemp.com

Table 2-Thermal Systems (all bulbs & capillaries are 316 SS)

CODE	DESCRIPTION
All Angle Direct Mount with 1/2" NPT (with "D" case only)	
04	4" stem x 3/8" diameter
06	6" stem x 3/8" diameter
09	9" stem x 3/8" diameter
0X	12" or longer stem x 3/8" dia. - specify stem length EXAMPLE: G45DA - 0X - 12" FB



Plain Bulbs	
11	Plain bulb, 3/8" x 3" active, + 12" rigid extension
12	Plain bulb, 3/8" x 3" active



Sliding 1/2" NPT on Bendable Extension	
87	3/8" x 3" active, 12" bendable extension
88	3/8" x 3" active, 18" bendable extension
8X	3/8" x 3" active, over 18" bendable (Specify)

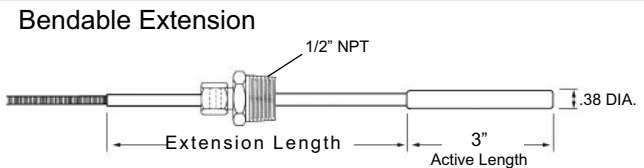


Table 3-Capillary Length

Specify Armored Capillary Length in Feet, up to 99 ft. (omit for "D" case).

L05 = 5 feet **L10** = 10 feet **L15** = 15 feet...etc.

Note: Stainless steel spring armor is standard protection on all capillary. Capillary over 40 feet requires XSI Spiral Interlock Armor option.

Table 4-Temperature Ranges

CODE	°F RANGES	DIV.
FB	-320/100°F	5°
FE	-120/120° F	2°
FG	-40/180°F	2°
FH	0/120°F	1°
FJ	60/120°F	1°
FL	20/240°F	2°
FN	0/300°F	5°
FP	50/550°F	5°
FR	50/750°F	5°
FS	200/1000°F	10°
FT	400/1200°F	10°

CODE	°F & °C RANGES	DIV.
DB	-320/100°F / -200/40°C	5°/2°
DE	-120/120°F / -85/50°C	2°/1°
DG	-40/180°F / -40/80°C	2°/2°
DH	0/120°F / -15/50°C	1°/1°
DJ	60/120°F / 15/5°0C	1°/1/2°
DL	20/240°F / -5/110°C	2°/1°
DN	0/300°F / -10/150°C	5°/1°
DP	50/550°F / 10/290°C	5°/5°
DR	50/750°F / 0/400°C	5°/5°
DT	400/1200°F / 200/650°C	10°/5°

Note: °C Ranges available on request

Filled System Thermometers Gas Actuated

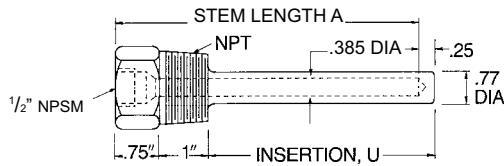
Table 5 - Accessories & Options

Code	Description
XAW	Acrylic Window (4 1/2" Cases only; not available in "F" Case).
XSG	Safety Glass Window (4 1/2" Cases only; not available in "F" Case).
XFR	Flush Mounting Ring for "E" Case.
XBF	1/2" NPT Fitting for #11 Bulb - Fits on Bulb or extension.
XCF	1/2" NPT Fitting - Fastens on spiral interlock armor (requires XSI option).
XSI	Spiral Interlock Armor (required over 40 feet).
XVD	Vibration Dampening feature (dampens vibration - available in all rear connected models).
XTW	Thermowell (see thermowell table below for order codes).

Thermowells for 3/8" dia. Elements

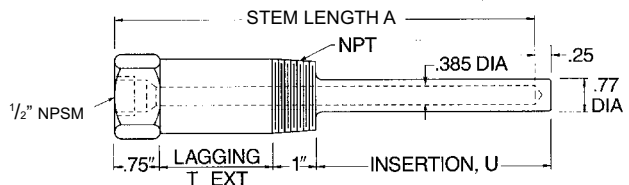
Standard Wells

External Thread P	Stem length A"	Insert Length U"	Order Code	
			304 s.s.	316 s.s.
3/4" NPT	4	2 1/2	046	146
	6	4 1/2	047	147
	9	7 1/2	048	148
	12	10 1/2	049	149
	15	13 1/2	050	150
	18	16 1/2	051	151
1" NPT	24	22 1/2	052	152
	4	2 1/2	053	153
	6	4 1/2	054	154
	9	7 1/2	055	155
	12	10 1/2	056	156
	15	13 1/2	057	157
18	16 1/2	058	158	
24	22 1/2	059	159	



Lagging Wells

External Thread P	Stem length A"	Insert Length U"	Lag Ext. T"	Order Code	
				304 s.s.	316 s.s.
3/4" NPT	6	2 1/2	2	247	347
	9	4 1/2	3	248	348
	12	7 1/2	3	249	349
	15	10 1/2	3	250	350
	18	13 1/2	3	251	351
	24	16 1/2	3	252	352



How to Order
Specify "TW" Plus Order Code
Example: **TW-146**